

# Universal Automatic Identification System SI-30

- ◆ **The First in the World !!!**
- ◆ **AIS built-in Color Electronic Chart...**
- ◆ **Built-in Worldwide Port Map !!!**
- ◆ **AIS Data Interfacing with all Kinds of GPS Plotter !!!**



## FEATURES

- ▶ Class-A Universal AIS Complying with IMO MSC. 74(69) Annex3, IEC 61993-2, ITU-R M.1371-1, ITU-R M.493-9, ITU-R M.825(DSC), IEC-60945, IEC-61162-1.
- ▶ Displaying navigational data based on Dynamic / Static data.
- ▶ Completely compatible with all system using NMEA standard.
- ▶ Edition of user message on navigation & ship securities is available.
- ▶ GLONASS/GPS function available receiving Signal from Russian Satellite.
- ▶ Interfaces with RADAR, ECDIS, GYRO COMPASS, and external GPS, etc.
- ▶ Easy identification on other ship's status by providing electronic chart data.
- ▶ System self-restoring function enhances stability.
- ▶ Adopted user-friendly one touch keypad.

## SPECIFICATIONS

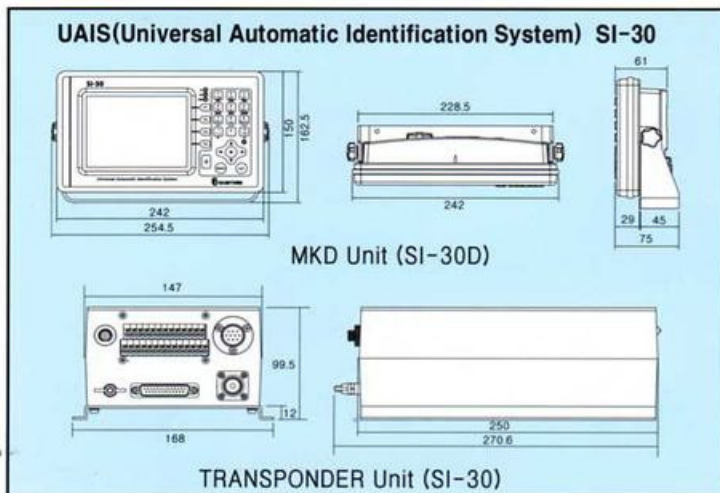
### ■ AIS Transponder Unit

- Components : Transceiver, Two channel for Receiver, One channel for DSC Receiver
- TDMA Transmitter
  - TX Frequency - 156.025 MHz - 162.025 MHz, manual/automatic setting
  - Transmitter Power - Min.2 W, Max.12.5 W manual/automatic selection
- TDMA Receiver
  - RX Frequency - 156.025 MHz - 162.025 MHz by 2 channels
  - RX CH1 - Default CH87B (161.975 MHz), manual/automatic setting
  - RX CH2 - Default CH88B (162.025 MHz), manual/automatic setting
  - Channel Spacing - 12.5 kHz and 25 kHz
- DSC Receiver - RX Frequency - CH70 (156.525 MHz)
- Modulation Method : GMSK(Gaussian low-pass filtered Minimum Shift Keying) GFSK(Gaussian Frequency Shift Keying)
- Bit rates : 9,600 bps(GMSK, GFSK) / 1,200 bps(DSC)
- External Interfaces : NMEA-0183/RS-422
- Power Supply : 18~32VDC, 2.5~4A, 115/230VAC (Rectifier)

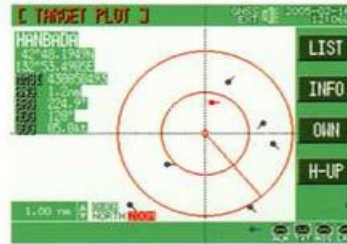
### ■ MKD(Minimum Keyboard and Display)Unit

- LCD Display : 5.6" TFT Color LCD with LED backlight
- Display Capability : Own ship's data and target ship's data, Chart data
- Electrical Interface to Transponder : RS-422
- Key board interface
- Buzzer on Keypad
- MKD own Power : 12W

## DIMENSIONS



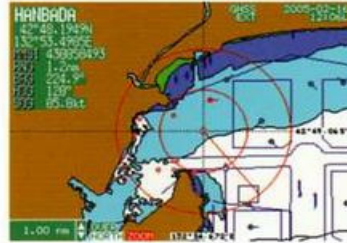
## DISPLAY



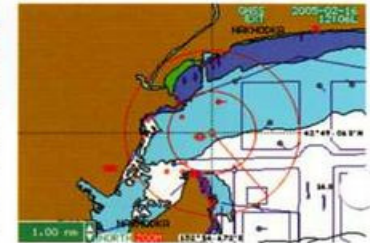
- Easy identification on target ship's distance and bearing from own ship.
- Easy identification on target ship's movement from own ship.



- Enhanced safe voyage by indicating target ship on the electronic chart.
- Alpha blending typed-menu-displayed function provides user convenience.
- Target indication can be adjusted to OFF, Zoom in/out according to user option.



- Target ship's movement can be identified on the electronic chart.
- Automatic ON OFF function reducing unnecessary key operation.
- Easy identification on other ship's status by providing electronic chart data.



- Wide screen by hiding operation data.
- Target ship's movement can be identified at one sight by floating whole electronic chart.

## COMPONENTS

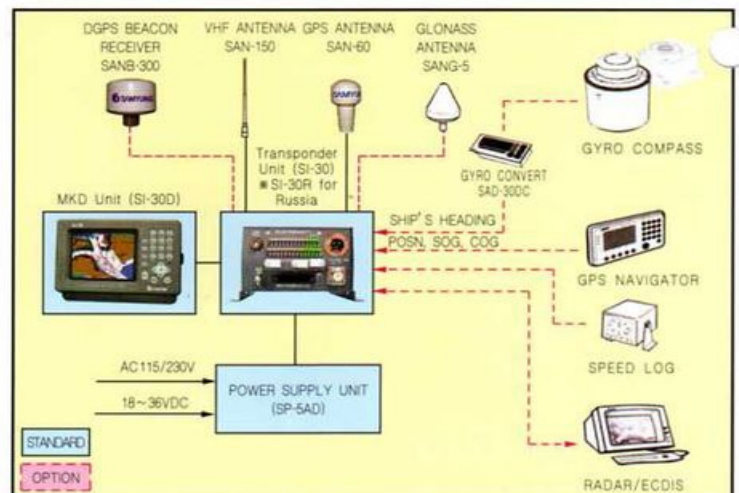
### ■ STANDARD

- Transponder Unit(SI-30)
- MKD Unit(SI-30D)
- GPS and VHF Antenna
- Power Supply (SP-5AD)
- Installation Materials/Spare Parts
- Instruction Manual

### ■ OPTION

- DGPS Receiver
- GLONASS Module and Antenna(SANG-5)
- GYRO Convert(SAD-30DC)

## CONFIGURATION



\* Specification is subject to change without pre-notice