



08

| RADAR | NAVIGATION AIDS | INSTRUMENTS | AUTOPILOTS | SATELLITE TV | COMMUNICATIONS | FISHFINDERS | SOFTWARE | SYSTEMS |



**Raymarine®**



Also available in white

## Ray49E. Class D DSC fixed mount VHF radio.

A compact, easy-to-use fixed-mount VHF radio with fist microphone and built-in speaker. This powerful VHF is available in stylish grey or white finishes and has a clear and bright LCD display with large easy-to-read digits and rotary controls for channel, volume, squelch and menu operation.

- Class D DSC (Digital Selective Calling) Transceiver.
- 'DSE' NMEA sentence for 3 decimal position precision.
- GPS Position, COG and SOG display.
- Dual, Tri, and Quad Watch.
- Programmable Scanning.
- Superior receiver with excellent intermodulation rejection.
- DSC Distress key transmits GPS position and a digital Mayday.
- Quick Access 16/Favourite key.
- NMEA 0183 Output for chartplotter position polling.
- NMEA 0183 input.
- 4 Types of Scan: All Scan, Saved (Memory) Scan, Priority All Scan, Priority Saved Scan.
- 'DSE' NMEA sentence for 3 decimal position precision.
- Submersible (IPX7 Standard).
- External speaker output.

## Ray54E. Class D DSC fixed mount VHF radio.

As well as popular VHF features such as extra large display, rotary channel knob, memory scan, weather channels, dual and tri-watch and 16 plus, the Ray54E can also transmit vital emergency information, including your boat identification, position and time of the distress call (requires NMEA data from your GPS).

The Ray54E has a powerful built in speaker for excellent audio quality and is available in Charcoal Grey or White.

### Features

- Large 60 x 30mm LCD display.
- Large channel number characters (28mm).
- Four-line GPS data in addition to large channel number.
- Powerful built-in speaker for excellent audio quality.
- Channel change, 16 Plus and HI/LO power controls built into microphone.



16 plus and a dedicated distress key can also be found on the fascia.

Dedicated 16 plus and hail buttons on the fist microphone.

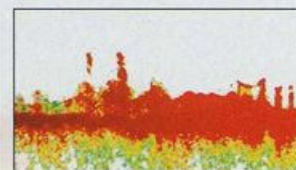
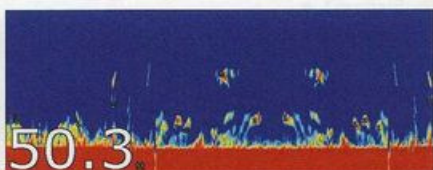
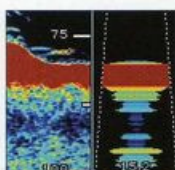
The Ray54E is also available in white.

The Ray54E can be trunnion or surface mounted.





# HD DIGITAL



See fish echoes and bottom returns in real time with the A Scope feature.

x2, x4 or x6 zoom for enlarged view of targets.

**Conventional technology.** This image shows a wreck of a destroyer which appears as one large mass.

**HD Digital technology.** The HD image of the same wreck clearly shows the masts, guns and superstructure.