



## Generasi Baru dari 178C Sounder !! Menghadirkan Menu Dalam Bahasa Indonesia

Garmin 420Si didesain khusus untuk kebutuhan bagi para profesional dan pemancing.



## High-Resolution GPS Chartplotter & Sonar Solutions *THE NEW WAVE IN MARINE NAVIGATION*

Dengan desainnya yg manis nan kokoh serta waterproof, menghadirkan user-interface dan menu dalam bahasa Indonesia, sehingga sangat memudahkan dalam penggunaan. Juga hadir dengan kemampuan sinyal satelit yg bersensitivitas tinggi.

Dalam penggunaan dengan versi sounder, Garmin 420Si dipaket dengan transducer dual-frekuensi yg sangat powerful.

Dengan tambahan optional kartu SD BlueChart g2 Vision, berbagai fitur dimensi baru akan tampil.

Menjadikan Garmin GPSMap 420Si sebagai sahabat setia bagi Anda yg professional dan pemancing.



**GPSmap 420Si  
( Bahasa Indonesia )**

## Technical Data Specifications (GPSMap 420Si)

### Physical & Performance

Dimensions (WxHxD) : 5.7" x 5.0" x 2.7" (14.5 x 12.7 x 6.9 cm)  
 Display Size (WxH) : 2.4" x 3.2", 4.0" diag (6.1 x 8.1 cm, 10.2 cm diag)  
 Display Resolution (WxH) : 240 x 320 pixels  
 Display Type : QVGA display  
 Weight : 1.3 lb (590 g)  
 Power Source : 12 volt external power  
 Waterproof : IPx7  
 Antenna : Internal antenna receiver  
 NMEA I/O : NMEA 0183

### Maps & Memory

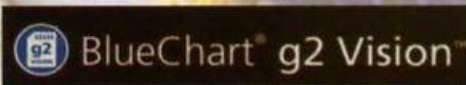
Basemap : Worldwide  
 Accept Data Cards : SD card slot (up to 2 GB)  
 Waypoints : 1,500 points (waypoints, favorites, locations)  
 Routes : up to 20 tracks  
 Track Log : 2 saved tracks (with 10,000 points)

### Featurings

- Garmin sonar compatible
- CANet compatible
- Audible alarm
- Tide tables
- Sun and moon information
- 3D map view, with optional BlueChart g2 Vision card
- Auto guidance, with optional BlueChart g2 Vision card

### With optional BlueChart g2 Vision card provides :

- Auto Guidance technology to find the best course for navigation
- High-Resolution satellite imagery
- Aerial reference photography to provide "real-world" images of ports, harbours, and marinas
- Mariner's Eye View 3D perspective of chart information for a quick, reliable and easy position fix
- Fish Eye View 3D perspective below the water line to display floor contours based on bathymetric charting data
- Tidal graphs, current arrows, marine services, coastal roads and points of interest details
- Detailed bathymetric fishing charts to emphasise bottom contour and depth soundings while removing selected navigation detail from the map for a sharper definition of the sea floor



### What's in The Box

- GPSMap 420Si
- Dual frequency transducer
- Tilt / swivel mount
- Protective front cover
- Power / data cable
- Owner's manual
- Warranty Card by Jasamarine



GPSmap 420 Si

Fishfinder 400C

Fishfinder 160Ci

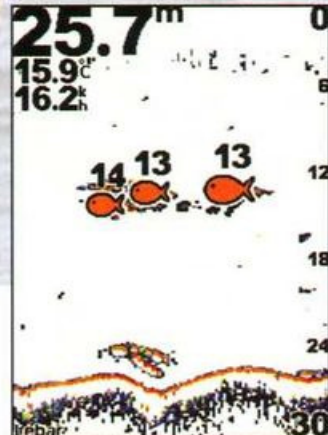
Unit Dimensions	5.7" x 5.0" x 2.7" (14.5 x 12.7 x 6.9 cm)	5.7" x 5.0" x 2.9" (14.5 x 12.7 x 7.4 cm)	6.1" x 4.9" x 2.9" (15.5 x 12.4 x 7.4 cm)
Display	4.0" diagonal, 2.4" x 3.2" (6.1 x 8.1 cm), 240 x 320 pixels, 4096-color QVGA	4.0" Diagonal, 2.6" x 3.3" (6.5 x 8.5 cm), 240 x 320 pixels, 4096-color QVGA	4.4" Diagonal, 3.2" x 3.2" (8.0 x 8.0 cm), 128 x 128 pixels, 16-color CSTN
Weight	1.3 lb (590 g)	1.1 lb (499 g)	1.1 lb (499 g)
Waterproof	Yes (IPX7)	Yes (IPX7)	Yes (IPX7)
Basemap	Yes (Worldwide)	No	No
Preloaded Maps	No	No	No
Ability to Add Maps	Yes	No	No
Accept Data Card	SD card (up to 2 GB)	No	No
Waypoints	1500	No	No
Routes	20	No	No
Frequency	50/200 kHz (dual freq) 80/200 kHz (dual beam)	50/200 kHz (dual freq) 80/200 kHz (dual beam)	200 kHz
Transmit Power	Dual Freq : 500 Watts (RMS), 4,000 Watts (peak to peak); Dual Freq : 400 Watts (RMS), 3,200 Watts (peak to peak)	Dual Freq : 500 Watts (RMS), 4,000 Watts (peak to peak); Dual Beam : 400 Watts (RMS), 3,200 Watts (peak to peak)	150 W (RMS), 1200 W (peak to peak)
Voltage Range	10-35 VDC	10-35 VDC	10-18 VDC
Maximum Depth	1,500 ft (dual freq), 900 ft (single freq)	1,500 ft (dual freq), 900 ft (dual beam)	900 ft
Cone Angle	14° or 45° (dual freq) 10° or 45° (dual beam)	Dual Freq : 10° - 45°; Dual Beam : 14° - 45°	14° or 45° (dual beam)
Language	Indonesian & English	English	Indonesian & English



GPSMap 420Si dengan Bahasa Indonesia user-interface yang sangat memudahkan penggunaan unit



Tampilan mata pelaut pada gpsmap 420si mempermudah pengelihatian jarak



Tampilan Fishfinder pada gpsmap 420 si. Dapat menampilkan simbol ikan lengkap dengan angka kedalaman ikan

Garmin International Inc.  
 1200 East 151st Street  
 Olathe, Kansas 6602, USA  
 913/397.8200 fax 913/397.8282  
 www.garmin.com

**Dapatkan !!  
 KARTU GARANSI RESMI  
 Di Dealer Bawah Ini :**



“Let's Join : [id-garmincommunity@yahoogroups.com](mailto:id-garmincommunity@yahoogroups.com)”