

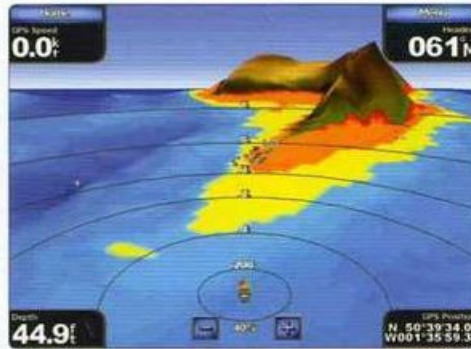
Typical Networked System



GPSmap® 4000 series



**Custom Combination** – Combine your key pages of information on a single screen



**Mariner's Eye 3D** – High definition 3D graphics bring land and bottom contours to life



**Aerial Photography** – Preview your next port of call with high resolution photographs



**Intuitive Smart Menu** – Soft keys make it quick and simple to get the most from your 4000 system



12" GPSmap 4012



10" GPSmap 4010



8" GPSmap 4008



Wireless Remote Control

**KEY** features

**4000 Series Network Chartplotters**

Choice of 12.1", 10.4" or 8.4" display size

Fully networkable with Radar, Sonar, Instruments and other 4000 and 5000 displays

NMEA 2000 and NMEA 0183 compliant

Worldwide Satellite Basemap

Optional wireless remote control

GPS antenna included

**Optional g2 Vision card offers:**

- AutoGuidance
- 3D Mariner's Eye view
- 3D Fish Eye view
- High Resolution Satellite images
- High Resolution Aerial photos
- Fishing Charts

See page 21 for details



Go to page 43 for full product specifications and comparisons