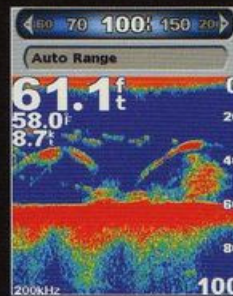
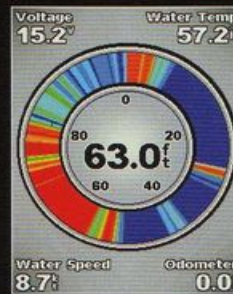


Fishfinder 300C



Adjust Range



Flasher

NEW

► Fishfinder 300C

Featuring a crisp, sunlight viewable 3.5-inch colour display, the Fishfinder 300C delivers a lot of performance in a compact and affordable unit. With a dual beam transducer included, it can scan a wider area for fish in shallow water, while having the power to reach down deep to 900 feet.

The 300C has a host of advanced features such as Adjustable Depth Line, Water Temperature graph, Zoom and a Round Flasher display mode to allow you to capture more detail. See-Thru, AutoGain and UltraScroll technology will give you the edge to catch more fish, more of the time. With a new, simple-to-use menu, so you can focus more on your fishing and less on working your Fishfinder.

2

2-Year Warranty

IPX7

Waterproof

Sonar

NMEA

NMEA 0183

Package Includes:

- Fishfinder 300C
- Transom/rolling mount transducer (dual beam)
- 6ft. power/data cable
- Bail mounting bracket
- Flush mount hardware
- Quick start manual

Go to page 46 for full product specifications and comparisons

KEY features

Fishfinder 300C

Super bright 3.5-inch QVGA colour display

Includes a 150W dual beam transducer for optimum fresh and salt water performance

Depth range to 900 ft (247m)

See-Thru, AutoGain and UltraScroll technology for enhanced performance

Full function, easy-to-use menu

Speed and Trip information with optional transducer

Audible Alarms

Adjustable Depth Line

Graphic record of water temperatures