

**Fishfinder  
Pertama  
Berbahasa  
Indonesia**

**Fishfinder 160Ci  
Fishfinder 400C  
GPSMAP 178C Sounder**

*New !!  
Very High Accuracy Receiver*

Fishfinder Garmin didesain khusus untuk kebutuhan nelayan, atau bagi Anda yang memiliki hobi memancing di laut. Dengan frekuensi 50/200 kHz<sup>\*)</sup>, Anda dapat mencapai

## Fishfinder Warna Untuk Nelayan dan Pemancing Pro

*Ideal untuk penggunaan di air dalam dan air dangkal*

area yang dalam dan luas di bawah kapal Anda. Fishfinder 160Ci, 400C, dan GPSMAP 178C Sounder memiliki layar warna dengan kontras tinggi dan fitur Depth Control Gain serta Ultrascroll. Casing yang kokoh dan waterproof serta menu pengoperasian yang sangat mudah, menjadikan fishfinder Garmin sebagai sahabat setia bagi nelayan dan Anda yang hobi memancing.



**Fishfinder 160Ci  
(Bahasa Indonesia)**



Transducer Plastic,



Transducer Thru-Hull,  
Bronze, Dual Freq

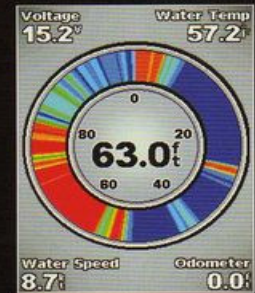
<sup>\*)</sup> tersedia di Fishfinder 400C

**Pastikan GARMIN yang Anda Beli Adalah Format Indonesia  
Jangan Sampai Anda Salah Pilih**

# Fishfinder 400C



Adjust Range



Flasher

Fishfinder 400C

## ► Fishfinder 400C

The Garmin Fishfinder 400C gives you a great underwater view, whatever the weather. It has a unique 4-inch QVGA display that's easy to see in bright sunlight, dual beam and a choice of either a 400 watt RMS in Dual Beam or 500 watt RMS dual frequency transducer. With all that you'll be sure to improve your catch.

The 400C delivers maximum scanning flexibility in depths ranging from one to 900 feet. UltraScroll design provides sonar updates, AutoGain, See-Thru targeting, fish size alerts and water temperature logs give you all the tools you need.

The fully automatic operation makes it easy to use, and the streamlined user interface gives it an elegant form factor. The Fishfinder 400 is also CANet capable.

## KEY features

### Fishfinder 400C

CANet compatible

Audible alarms

Dual frequency and Dual Beam sonar capable

Split-Screen zoom

UltraScroll (displays fish targets at higher boat speeds)

See-Thru technology (exposes fish hidden in cover)

AutoGain Technology (reduces clutter, maximises targets)

Adjustable depth line (measures depth of underwater objects)

A-Scope (real-time display of fish passing through transducer beam)

Water speed capable (displays speed on water)

#### Package Includes:

- Fishfinder 400C
- Swivel mounting bracket
- Power/data cable
- Dual beam or dual frequency transducer
- Protective cover
- Owner's manual

Go to page 46 for full product specifications and comparisons

2  
2-Year Warranty

IPX7  
Waterproof

CANet  
CANet

Sonar

NMEA  
NMEA 0183

## Spesifikasi Standard

### Fitur - Fitur

- Pilihan Display :** Auto Range, zoom 2x dan 4x auto dan manual, 3 simbol ukuran ikan A-Scope (khusus FF 400C)
- Alarm :** Alarm air dalam, alarm air dangkal, alarm baterai lemah
- Transduser Auto-Sense :** Menampilkan data kedalaman dan temperatur secara otomatis
- Teknologi See-Thru® :** Menampilkan sinyal balik secara simultan
- Depth Control Gain (DCG)® :** Secara otomatis mengatur sensitivitas fishfinder sesuai kedalaman
- UltraScroll :** Menampilkan refresh rate yang cepat pada layar sonar
- Pengaturan :** Bottom Lock (Tipe GPS MAP 178C & FF 400C)

### Fisik

- Casing :** High impact material, full gasket
- Tombol :** Backlighted
- Temperatur :** -15°C sd 70°C
- Waterproof :** IEC 529, level IPX-7

### Aksesoris

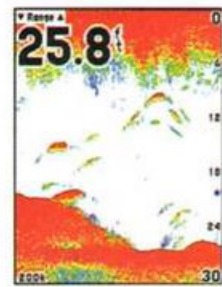
- Standar :** Power Cable  
Transom Mount Transducer  
Protective Cover  
Mount Bracket  
User's Manual  
Antenna + Kabel (\*)

### Transducer Opsional :

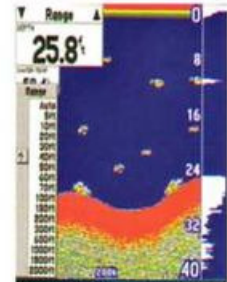
- Plastic transom mount with depth/temp  
Plastic thru-hull with depth  
Bronze thru-hull  
Speed Sensor

### Maps \* :

- BlueChart (Peta Laut)  
Indonesia City Select



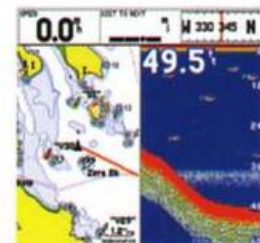
Auto Gain meminimalkan noise, menampilkan ikan lebih jelas.



Range kedalaman dapat ditentukan manual atau otomatis.



Pengguna dapat mengeset alarm berdasarkan ukuran ikan, kedalaman serta temperatur air



Tampilan pada GPSMAP 178C Sounder. Dapat menampilkan halaman Peta & Sonar secara



GPS 178C Sounder

Fishfinder 400C

Fishfinder 160Ci

Unit Dimensions	6.3" x 4.9" x 2.8" (16.0 x 12.5 x 7.1 cm)	5.7" x 5.0" x 2.9" (14.5 x 12.7 x 7.4 cm)	6.1" x 4.9" x 2.9" (15.5 x 12.4 x 7.4 cm)
Display	4.5" Diagonal, 3.2" x 3.2" (8.1 x 8.1 cm), 320 x 320 pixels, 256-color CSTN	4.0" Diagonal, 2.6" x 3.3" (6.5 x 8.5 cm), 240 x 320 pixels, 4096-color QVGA	4.4" Diagonal, 3.2" x 3.2" (8.0 x 8.0 cm), 128 x 128 pixels, 16-color CSTN
Weight	1.2 lb (553 g)	1.1 lb (499 g)	1.1 lb (499 g)
Waterproof	Yes (IPX7)	Yes (IPX7)	Yes (IPX7)
Basemap	Yes	No	No
Preloaded Maps	No	No	No
Ability to Add Maps	Yes	No	No
Accept Data Card	Garmin data cards	No	No
Waypoints	3000	No	No
Routes	50	No	No
Frequency	50/200 kHz (dual freq) 200 kHz (single freq)	50/200 kHz (dual freq), 80/200 kHz (dual beam)	200 kHz
Transmit Power	Dual Freq : 500 Watts (RMS), 4,000 Watts (peak to peak); Single Freq : 400 Watts (RMS), 3,200 Watts (peak to peak)	Dual Freq : 500 Watts (RMS), 4,000 Watts (peak to peak); Dual Beam : 400 Watts (RMS), 3,200 Watts (peak to peak)	150 W (RMS), 1200 W (peak to peak)
Voltage Range	10-35 VDC	10-35 VDC	10-18 VDC
Maximum Depth	1,500 ft (dual freq), 900 ft (single freq)	1,500 ft (dual freq), 900 ft (dual beam)	900 ft
Cone Angle	20°	Dual Freq : 10° - 45°; Dual Beam : 14° - 45°	14° or 45° (dual beam)
Language	English	English	English & Indonesian

Kapasitas kedalaman tergantung salinitas air, tipe dasar permukaan, dan kondisi air lainnya. Tersedia berbagai jenis & tipe Transducer lainnya

\* Khusus GPSMAP 178C Sounder.

# GARMIN™

Garmin International Inc.  
1200 East 151st Street  
Olathe, Kansas 6602, USA  
913/397.8200 fax 913/397.8282  
www.garmin.com

**Dapatkan !!  
KARTU GARANSI RESMI  
Di Dealer Bawah Ini :**

