

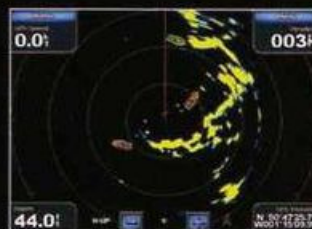
Radar and GPS



Split screen



Radar overlaid on map



MARPA (Mini Automatic Radar Plotting Aid)

NEW

▶ GMR 18 | GMR 24

Garmin radomes represent a breakthrough in digital X-band radar design. The GMR 18 is a high performance radar in a compact 18-inch radome. With a narrow 5° beamwidth and 4kW of power it is twice as powerful as most other radars in its class. And with 36nm maximum range the GMR 18 gives you a great radar package at a great price.

The new GMR 24 radome delivers exceptional performance with 4kW of power focussed into a narrow 3.6° beam for best-in-class target definition and weather penetration. Maximum range is 48nm. The unique Garmin dual-speed antenna sweep allows fast screen updates for high speed powerboats, while conserving power on sailboats.

GMR 18 and 24 are compatible with Garmin 3000, 4000 and 5000 Multi-function displays, and when combined with a suitable heading sensor, offer radar overlay and MARPA.

Package Includes:

- GMR 18 or 24
- Power/network cable
- Mounting hardware kit
- Cable grommet
- Owner's manual
- Installation instructions



2-Year Warranty



Network Capable



Waterproof

NEW

▶ GPS 17x



A new generation of high sensitivity GPS receivers that won't lose GPS reception even in poor conditions, this antenna is even available with an optional below deckhead mount. Available with NMEA 2000 or 0183 outputs.

KEY features

GMR 18

- 18-inch diameter radome
- 4kW of transmit power
- 5° beamwidth for high-definition targeting
- 36 nm max range
- Dual-rotation speed 24/30rpm
- Plug-and-play network compatible

GMR 24

- 24-inch diameter radome
- 4kW of transmit power
- 3.6° beamwidth for high-definition targeting
- 48 nm max range
- Dual-rotation speed 24/30rpm
- Plug-and-play network compatible



Network Capable



2-Year Warranty



▶ GMR 404 | 406

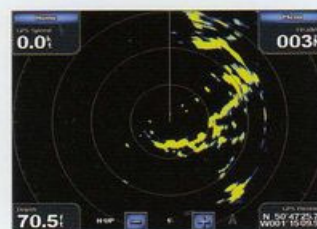
Ships. Shores. Birds. Whatever you're scanning on radar, you'll see it sooner – and in sharper detail – when you scan with the Garmin GMR 404 or 406 open array antennas. Both are powerful 4-kilowatt X-band digital radars that combine 72 nm maximum range with high-definition targeting and selectable 24 or 48 rpm antenna rotation speeds.

The GMR 404 is a 4-foot scanner with 1.8° beamwidth for superior target separation. The GMR 406's 6-foot "big sweep" antenna takes beamwidth down to 1.18° for even more detail. Any network-compatible Garmin chartplotter can double as your radar screen. Six pulse length/PRF settings help optimise target returns at all range scales. For radar plotting and collision avoidance, MARPA target tracking is optionally available (heading sensor required).

Package Includes:

- GMR 404 or 406
- Pedestal*
- Carrying strap
- Field material kit
- Marine network data card
- GMR 404/406 cable
- Field install cable end kit
- Printed material kit

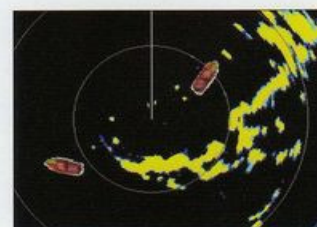
*Please note: although the pedestal is listed separately for sale, it is required for system operation.



Radar screen



Radar overlaid on map



MARPA (Mini Automatic Radar Plotting Aid)

KEY features

GMR 404 and 406

X-band digital colour display radars

Automated tuning and simple plug-and-play installation

Overlay radar information onto charts – plus MARPA target tracking

Power output: 4kW

GMR 404 - 1.8° beamwidth

GMR 406 - 1.18° beamwidth

Dual-speed rotation 24/48 rpm

Maximum range 72 nm

Waterproof to IPX6

Go to page 47 for full product specifications and comparisons